



**HYVA
HOOK LOADER**

**DAF XDC 450 8X4 HYVA
HOOK LOADER**

Make / Model:

DAF XDC 450 FAD 8x4 Rigid Chassis

Driveline:

Fitted with 10.8 litre, multi-torque 6 cylinder Euro 6 MX-11 diesel engine.

- Outputs 330 kW (449 hp) at 1,600 rpm
- Max Torque 2,350 Nm at 900 – 1,125 rpm

Fitted with automatic TraXon 12 speed 12TX2610 overdrive gearbox, ASR (anti-slip regulation), Eco performance, rear driven axle mechanical differential lock. Engine idle shutdown after 5 minutes idle time.

- Gear ratio 12.92 – 0.77
- Axle ratio 3.73

Cab External Features:

- New 2023 aerodynamic cab.
- DAF Digital Vision System - Foldable camera above cab doors with two displays mounted to inside cab.
- Midnight blue translucent external sun visor.
- Large curved front windscreen.
- Double glazed window in cab rear wall.
- Passenger lower door window of tempered single layer safety glass.
- Cab entrance step with anti-slip tread. 3 steps.
- Central door locking system with light checker function. Includes 2 keys.



- LED head lights with impact resistant Lexan lens and levelling device.
- LED day time running lights integrated into headlight units.
- LED head and bumper mounted fog lights.
- Maintenance free 4-point mechanical cab suspension with integrated shock absorbers.
- Steel front underrun protection.
- Steel three piece bumper.
- Radiator protection plate.

Colour:

- | | |
|-------------------|---------------|
| • Cab | E1980WHITE |
| • Camera housing | Crystal White |
| • Head lamp panel | Crystal White |
| • Chassis | Grey |
| • Bumper finished | Grey |
| • Grille strips | Black |

Chassis:

Wheelbase is 5,700 mm with 1,650 mm overhang. Chassis is 310 mm x 6 mm steel with full length reinforcement. Horizontal exhaust discharge at the side of DPF/SCR unit low exhaust diffuser. Exhaust discharged to right hand side.

EAS unit behind 2nd front axle on right hand side. Horizontal battery box with 45 L AdBlue tank below at left side of the chassis.



Fitted with 340 L aluminium fuel tank on left hand side.

- Rear underrun protection
- Rear lights LED
- Steel air tanks

Safety & Security

- Speed limit recognition informs the driver of the maximum permitted speed, using map-based information and traffic sign recognition via a camera at the front of the vehicle.
- Drowsiness detection assesses the driver's alertness through vehicle systems analysis and warns the driver, when deemed necessary.
- Drive-off assist informs the driver of vulnerable road users in the front bumper area and, if applicable, warns the driver to prevent collision.
- Safety system that detects and informs the driver of a moving object near the co-driver's side of the vehicle. This also supports the driver to prevent collisions with other road users when changing lanes.
- Preparation for alcohol interlock system.
- Compliant with UN Regulation R155, concerning cyber security management systems, and UN Regulation R156 concerning software update management systems.



Cab Interior:

Cab interior has hexagon decoration with light trim colour on roof and roof console. Panels and below dashboard are grey. Accents are facet black. The dashboard descends towards front windscreen to create more vision with plane finish. Dashboard has extractable table on top of centre console. Centre console has open storage compartment also. 2 x 12V/5A dashboard power supply and 1 USB-A connections.

Driver seat is air suspended, high backed, with armrests and black seat belts. Passenger seat is foldable. Pull down roller blind on driver side. Windows are electric. Interior lighting is LED with dimmable red night driving light and separate spot lights for driver and passenger. Equipped with cruise control. Fitted with leather steering wheel. Includes audible reverse warning system with override switch, and basic engine immobiliser.

Cab is climate control, regulating temperature, air distribution and air conditioning. Fitted with residual heat pump.

Fitted with digital (smart) VDO DTCO tachograph with Global Navigation satellite System (GNSS) receiver and dedicated short-range 2nd axle of communications (DSRC) unit. DAF Luxury Plus Infotainment System – additional 10.1 inch touch screen display with audio and infotainment functionality.

An FM/DAB/DAB+ radio is integrated in the system as well as streaming functionalities via USB and Bluetooth.

Luxury speaker system – two bass speakers, two tweeters and full range frequency speaker.

Driver performance assistant (DPA) information is shown on 5" colour TFT display in instrument panel.

Braking System:

Features ventilated disc brakes front and rear. Dual circuit air system with electronic control (EBS). Twin cylinder air compressor with heated dryer and economy mode. Fitted with MX engine brake – hydraulically operated compression brake assembly integrated in the valve rocker group. Works simultaneously with the exhaust brake.

Electro-pneumatic park brake with auto apply functionality when the driver's door is open and ignition is off. Spring brake cylinder on the 2nd axle of the rear tandem axle.

Electrical Power Supply:

Alternator 110 A, Batteries 2 X 175 aH

Axles & Suspension:

Front axle 167N, 20 mm vertical offset. Parabolic leaf suspension with shock absorbers and stabiliser - Max load 2x 7.1 ton.

Rear spring max load 19.0 t. Brake system designed load 19.0 t.

Double driven rear tandem axles type SR1132T with single reduction and trapezium leaf suspension. Mechanical cross-axle and inter-axle differential locks. Max group load 19.0 tonnes

Power Take Off (PTO):

First gearbox PTO type NH/4c mounted below gearbox countershaft. Gear ration 27/30, direct pump drive.

GVC & GCM:

Chassis weight related technical GVM max 32,000 kg
Driveline related max GCM 35,500 kg class 2

Warranty:

2 year warranty on chassis and 3rd year on driveline. This takes care of all warrantable repairs on the vehicle for two years and on the driveline for a third year together with associated breakdown coverage.

Service & Maintenance

Two options are available at additional monthly cost,
Option 1) Compliance package
Option 2) Full R&M Package
Please ask for a full details or a monthly cost.



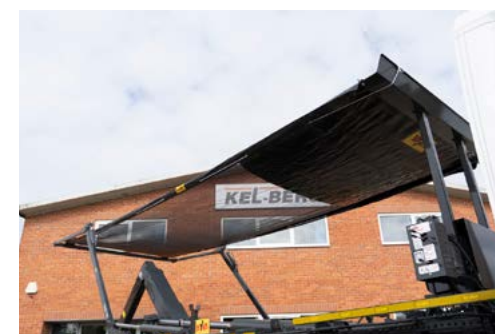
Body Description:

The chassis is fitted with a HYVA Titan 26-56 RORO hook loader system. It is built using high tensile steels that offer strength and a low installation height along with increased stability and handling. The main lifting cylinders have heavy duty 90 mm piston rods, along with a heavy duty main lifting frame and rear pivot assembly.

Rear facing container locks meeting CHEM standard are fitted with two rear rollers, plus an additional three reinforced container rollers bolted on per side with lubrication points. Also features two rear stabiliser jacks, anodised aluminium side guards on galvanised brackets and rear under run bar. Conspic markings are fitted to comply with WVTA.

Rear light boards and second steer axle mud wings are easily removed and replaceable if damaged. The newly designed step by step in-cab hook controls are pneumatically operated and feature body raised and rear stabilizer deployed warnings.

The HYVA hydraulic system is powered by HYVA PTO and bent axis piston pump.



Sheeting System:

The easy HYVA width adjustable sheeting system is a double arm system that allows it to cover a range of containers. The Tarpaulin / net is dispensed from a roller and is fitted with elastic cords to enable a secure fixing to the container with the aid of an adjustable boat hook pole. A fully integrated hydraulic system that can be selected by the flick of a switch on the external sheeting system control panel situated behind the cab driver side.

